

# Car-O-Tronic® Vision2 X3

Electronic Measuring System  
with Vision2 X3 Software

*Shown with handEye®, a free  
wireless software application  
for iOS and Android*



**CAR-O-LINER®**

# The most advanced, easy-to-use

## Powerful and accurate

The **Car-O-Tronic Vision2** electronic measuring system for collision damage repair is the most powerful system available. The sensor-equipped measuring slide with a built-in versatile remote control and protective rubber "bumper-zones" delivers real-time data three times per second to the advanced and easy-to-use **Vision2 X3** software. Photo-based, and backed by Car-O-Data, the world's most comprehensive vehicle database, it allows you to accurately and quickly target measuring points.

## Easy to learn and use

The system is simple to learn and use with automatic centering and measuring abilities, few measurement steps, user-friendly menus and access to the unique Infocenter. Document the entire repair process in pictures with text and e-mail files to insurance companies directly from within the software.



## Totally Compatible with Any Bench

Adapter kits make the system fully compatible with almost any alignment bench. **Car-O-Tronic** is easy to move because of its small size. Analysis and diagnosis of damage can be accomplished even before raising the vehicle on the repair bench. You save time and keep bench systems free.

## Measuring Slide with Remote Control

The Measuring Slide communicates wirelessly with the Car-O-Tronic Vision2 **X3** software. Through sensors in each joint and a measuring head underneath, it delivers real-time measuring data three times per second. The built-in, versatile remote control lets the operator almost effortlessly manage the entire measuring process without having to be at the computer.

The unit's two keypads are easy to use. Press the bulls-eye button on the end for automatic measurement of the entire vehicle. Use the keypad on the side to browse through monitor menus while keeping an eye on the PC monitor or handEye.



*Car-O-Tronic with Vision2 **X3** software handles standard, as well as absolute and comparative, measuring. The sensors in each joint deliver real-time data three times per second*



# measuring system on the market

## Measuring Bridge



The measuring slide mounts and moves on the Measuring Bridge, which has microscopic markings in its rails to enable the measuring head beneath the slide to determine its horizontal position. Available in 4, 5 & 6 meter lengths.

Smart LED lamp shines green when you are on target and red when you're not

Rubber "Bumper Zones" around key areas protect the Measuring Slide as well as vehicles



Changing battery packs is easy – just eject and reload!

## Features and Benefits

- **Wireless** — no targets, sensors or lasers
- **Compatible** — works with nearly any frame system
- **Comprehensive Vehicle Database** — for over 15,000 cars, trucks and SUVs using Car-O-Data vehicle information
- **Integrated remote control** — puts the work at your fingertips
- **Measuring Parts included** — reach any-place under the vehicle
- **HMP adapter included** — for upper body measuring
- **Sensors in each joint** — deliver real-time data 3 times per second
- **Precise, 3D measurements** — for all under- and upper- body locations
- **Photo-based images** — offer easy point identification
- **Suspension diagnosis**
- **Worldwide VIN decoding** — easy to find correct vehicle in database

## Hardware & Accessories

Car-O-Tronic Measuring Slide

High Measuring Point Adapter

Measuring Bridge in several lengths

Measuring Parts

PC Cabinet (Optional)

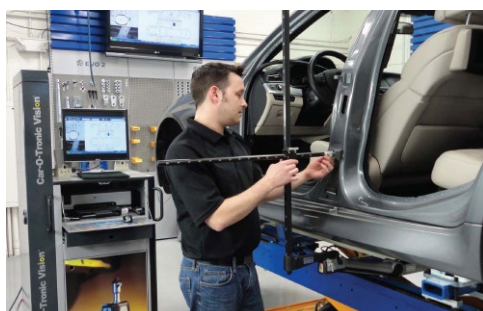
Monitor Cover (Optional)

Support Stand (Optional)

Adapter Kits (Optional)

## High Measuring Point Adapter

Upper-body measuring is simple and accurate with the High-Measuring Point Adapter.



## PC Cabinet

The protective PC Cabinet offers easy access to your computer, monitor and printer. The Measuring Slide stores together with the High-Measuring Point Adapter inside the cabinet. (Monitor & PC sold separately)

Compartment for the High-Measuring Point Adapter and Measuring Slide

Printer bay and keyboard tray

Convenient compartment for PC and accessories

Protective rubber "Bumper-Zones"



## handEye™

Free wireless mobile software application for iOS and Android



**handEye** is a totally new, innovative application that works with the **Vision2** software. It makes measuring easier and faster than ever before by communicating with the PC via wireless network technology thereby eliminating the need to move back and forth to the PC screen. The information is now in your hand!

If equipped with a magnet, your device using **handEye** can be attached to the car to keep both your hands free. The ergonomics, high performance and precision of **handEye** makes it an efficient tool for any body shop!



Get handEye  
at the App Store  
for iOS, Apple



Get handEye at  
Google Play  
for android



## Support Stand

With the M802 support stand, analysis and diagnosis can be performed even before lifting the vehicle on the repair bench, thus saving time and freeing your bench systems. (Optional)

# CAR-O-DATA

## The world's largest vehicle measurement database

Virtually every vehicle on the road today can be found in Car-O-Liner's vehicle information database which contains measurements for more than 15,500 vehicles.

**Car-O-Data is seamlessly integrated with Vision2** software and consistently provides access to current and reliable data. With all crucial references at your fingertips it is certain to be a profitable addition to your business!

New and updated vehicle models are continuously measured by our international team of trained measuring engineers. All measurements are made in close cooperation with vehicle manufacturers around the world.

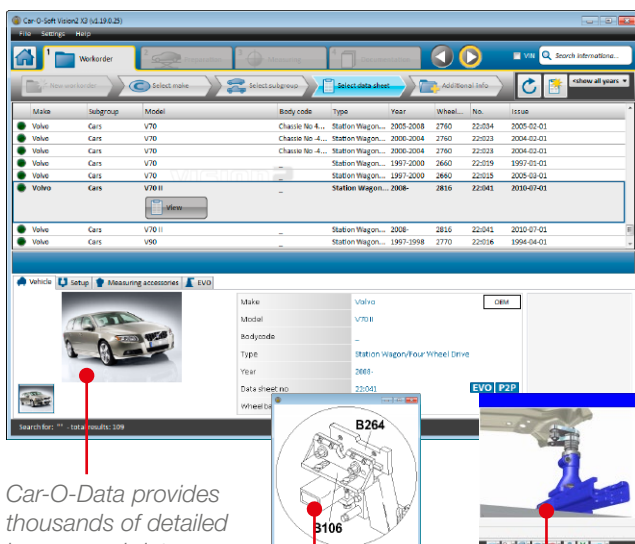
**The Car-O-Data Index** – accessible from the InfoCenter menu – lets you update your vehicle database in an instant over the Internet. Every day new

interim data sheets and reference data for numerous new and older vehicle makes and models are available for download.

### 1-year subscription to Car-O-Data available

**Car-O-Tronic** is delivered with a 14-day trial subscription to **Car-O-Data**. One-year subscriptions may be purchased. Subscribers have instant access to updated vehicle data and software via the Internet\*.

**Increase both repair quality and profits.** With our comprehensive measuring data you will see an immediate improvement in the quality your technicians put into every repair. Our measuring specifications increase the productivity and the efficiency of the work – both prerequisites for your profitable business.



Car-O-Data provides thousands of detailed images and data.

Click on Setup to find Car-O-Data's detailed clamping information

Car-O-Data includes info on the use of our EVO 1-2-3 Anchoring and Holding system

### Car-O-Data Database Subscription

- Vehicle database covering over 15,500 models
- Seamless integration with **Car-O-Tronic Vision2 X3** software
- Continuous instant access to the program updates and the latest vehicle measurements through internet download. (Quarterly updates are available via DVD.)

\* Requires internet connection

# Vision2 X3 Software

## Advanced software guides the entire repair process

**New workflow increases user efficiency by as much as 20%!**

**Vision2** is part of the Vision system, Car-O-Liner's state-of-the-art measuring software that guides the entire repair process and performs automatic centering, measuring and documentation.

The brand new **Vision2** interface, with super user-friendly graphics, is so easy to use that technicians can now measure damaged vehicles 20% faster than when using previous versions of Vision software.

Photo-based **Vision2** is integrated with **Car-O-Data**, the world's largest vehicle database, making it easy to find all the vehicle information you need when connected to the internet. With over 15,500 measured vehicles it's even easier to find correct measuring points — now with 3D presentation!

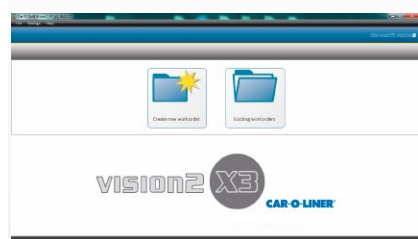
All these features working together contribute to reduced cycle times and create accurate and efficient alignment work.

### Special functions in Vision2 X3

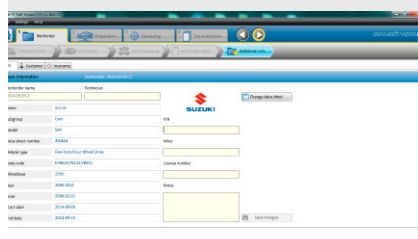
- Upper Body Point-to-Point measuring on vehicles including Full Frames, Light Trucks and SUV's.
- Suspension Check Diagnosis to find bent suspension parts during the repair process
- Surface Damage Diagnosis
- Worldwide VIN decoding system integrates seamlessly with the world's largest vehicle dimension database.
- Multimedia support for EVO a universal system for anchoring, fixturing and holding.

**Super-fast results with only three measuring steps:**

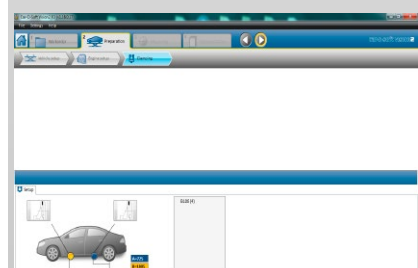
**1** Start measuring by registering a work order and entering car make and model.



*It is easy to get started. Simply start the Vision2 software and choose to either Create New Work Order or Open Existing Work Order.*

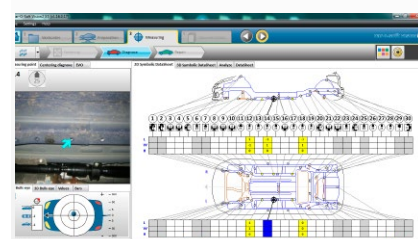


*Submit customer data and insurance information under the Customer and/or Insurance tab.*

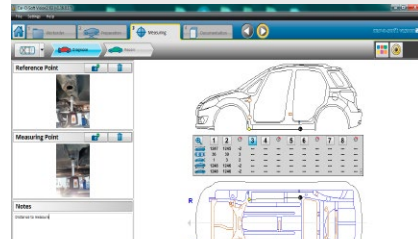


*After submitting the general vehicle specifications you receive all the crucial information required — where to put the clamps, what extra equipment you may need and much more!*

**2** Conduct automatic centering and measuring of the vehicle at the same time.



*Just press the bull's-eye shaped button for automatic measuring. The ASP (Automatic Search Point) function displays photos of the measuring points automatically on-screen as the Measuring Slide moves from point to point.*



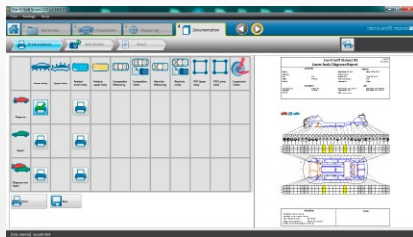
*In Absolute and Comparative measuring modes it is possible to describe, with photos and in text, how the different points have been measured.*



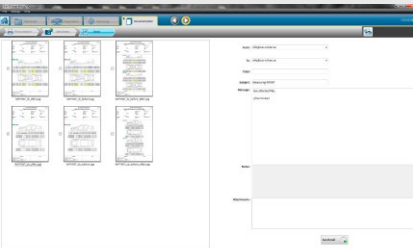
*When measuring during alignment you can easily zoom in on specific details for maximum control.*



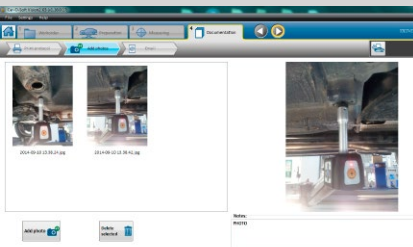
### 3 Print out the measuring results and you are finished!



Under the Documentation tab you will be able to create documents verifying that the vehicle is restored to pre-accident condition. Choose from 15 alternative documents.

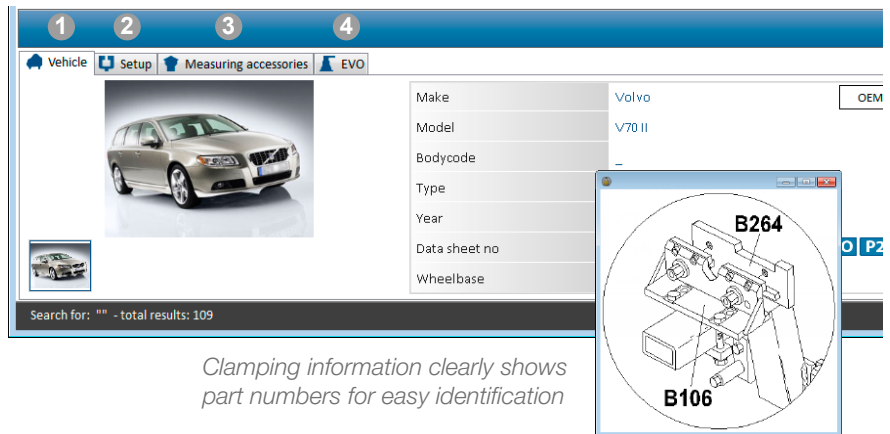


Vision2 has extensive features for documentation. These documents may include photos and can be printed, exported or e-mailed to insurance companies and customers.



Use the Viewer to choose the photos you want to attach to your e-mail.

**i The Infocenter** is always accessible and provides almost unlimited possibilities for updating vehicle data, news, support and interactive training.



#### 1 Vehicle Info

Under the Vehicle tab you'll find information such as a photo of the chosen vehicle, the vehicle's datasheet number and the wheelbase.

#### 2 Set-Up

Information regarding which clamps to use and where to attach them may be found under the Setup tab. Diagrams help you to find the correct equipment and position.

#### 3 Measuring Accessories

Under this tab is information regarding accessories.

#### 4 EVO

Easily discern which EVO anchoring and holding equipment to use by clicking on the EVO tab. Illustrations clearly show the proper EVO equipment to choose.

#### The Vision2 software system requirements are:

- Operating system: Microsoft® Windows XP SP3 Professional or newer
- Internet (recommended)
- For more detailed system requirements please contact [info@car-o-liner.se](mailto:info@car-o-liner.se)
- For complete instructions and additional information such as vehicle set up and vehicle measuring, suitable adapters, accessories, clamp charts, etc., see the Vision2 X3 Instruction Manual.

Car-O-Liner is the leading global provider of high-quality, technologically-advanced collision repair equipment to the automotive aftermarket. For more than 40 years, we have supplied the industry with innovative solutions, technical development, training and customer support.

According to our customers, Car-O-Liner's collision repair equipment is the best made, the easiest to learn and use, and includes everything needed to reduce cycle times and increase profits. With Car-O-Liner equipment in your shop, your customers - the vehicle owners and insurance companies - will experience safety and complete satisfaction from your work.

Car-O-Liner's headquarters are located in Gothenburg, Sweden. Subsidiaries are located in Sweden, Norway, USA, Great Britain, France, Germany, India, Singapore and China, and distributors can be found in more than 70 countries.

*Car-O-Liner is recognized for its leadership in the marketplace by continuously delivering high quality products and exceptional customer service.*



car-o-liner.com



**CAR-O-LINER®**

Car-O-Liner Hulda Mellgrens gata 1 SE-421 32 Västra Frölunda, SWEDEN  
Tel: +46 (0) 31 721 10 50 [www.car-o-liner.com](http://www.car-o-liner.com) [info@car-o-liner.se](mailto:info@car-o-liner.se)